

SDG 35



In a storefront location with long and large banks of windows that must be secured with window gates, instead of attaching each gate to the window mullions, the Top Track System lets you secure the gates to each other, not the window frames. As a result, each leading edge of the window gate has a heavy duty roller bearing that feeds into the aluminum top track secured above the window.

The Quantum Top Track with roller bearings is ideal for use as a supportive mechanism for Quantum retractable grilles. The combination of these two advanced security measures offers the highest level of protection for any inventory including guns, cigarettes, liquor, cell phones and pharmaceuticals.

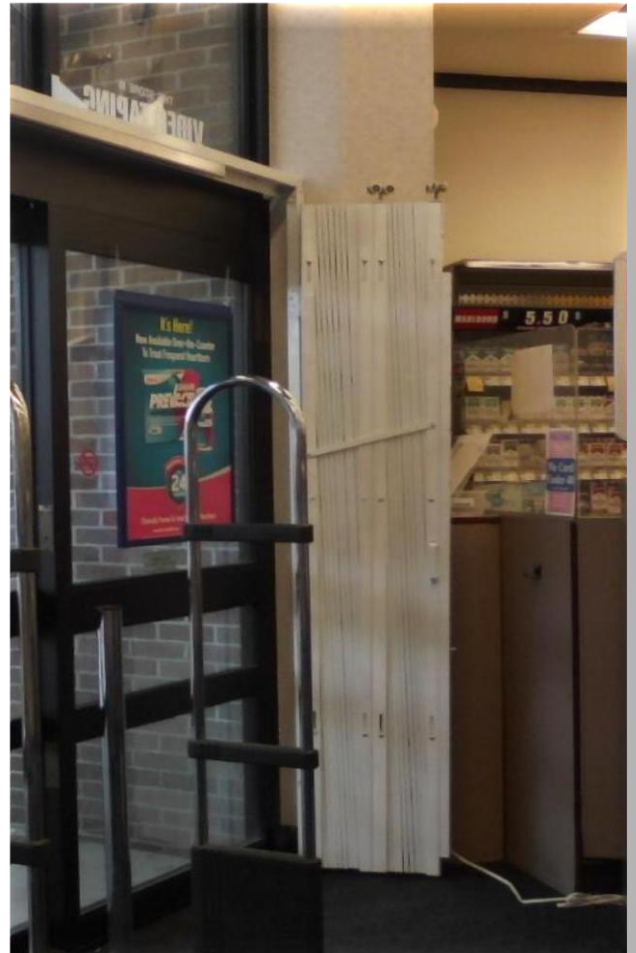
Info@quantumsecuritygates.com

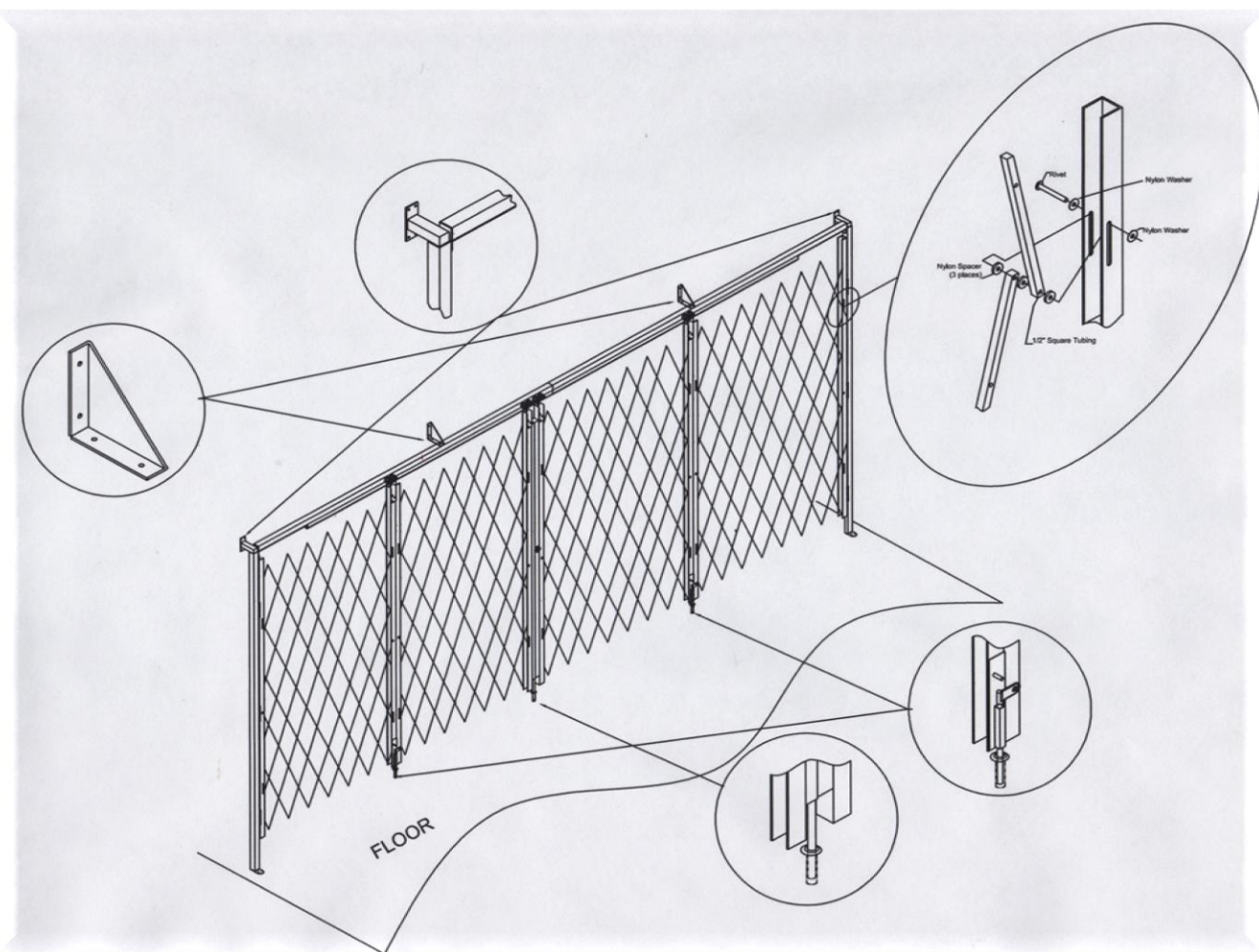
1-844-694-2837

www.quantumsecuritygates.com

FOLD AWAY FEATURE

Quantum top track systems allow for the gates to come out of the track and fold away for unrestricted access to the store front doors and windows





SDG 35 STANDARD SPECIFICATIONS

Four gate panel 87 ½" High spanning 21 ft Width

Quantum Security Gates are made from ½" x ½" cold rolled steel tubing, powder coated finish white riveted back to back with a nylon spacer to prevent scratching and smooth operation, The aircraft quality rivets are positioned at 7 ¾" centers at each overlap, for optimum strength.

The tubular diamond pattern webbing slides inside of the 16 GA. roll formed steel end channels at each end of the gate. The hinged end of the gate is mounted with 3 welded butt hinges to the end post.

When suspended from the extruded aluminum track 6063t5 Alloy, the gates are carried by four hangers each have 4 ball bearing nylon tire wheels for smooth travel. The track and end supporting posts are 1 ½" x 1 ½" powder coated steel tubes, extended 3" from the face of the window frames, two steel gussets mounted to the top of the track and the vertical window mullions add additional support.

The aluminum angle at the start and end of the track allows for the security gates to swing out of the track and re-align the hangers to go back into the track.

The gates are locked with the 207 extruded aluminum lock post, containing hook latch and mortise cylinder locks, (you can have keyed alike to front doors) as well as the enclosed drop pin to secure to the floor, into a stainless steel dust cap.

The lock post has extruded flanges to wrap around the receiving post to prevent pry bar access. Two additional drop down pins are attached to the joint of the gates for extra strength.

The top track is mounted flush to the top of the motor box, to avoid interference with door sensors.

4 wheel hanger carriage



Minimal deflection



16" stacking



4" space



We understand that physical security is an incredibly important crime deterrent and recognize that reliable, easy-to-use and effective security is crucial. We also understand the importance of affordability. This is why we offer a wide variety of different products to meet any unique application or budget.



Let our experienced and professional staff assist you in choosing the most cost effective and aesthetically pleasing solution for your security needs.