

ROLLING CLOSURES

Installation instructions

1. Site verification:

- Check to see if the width and height on site correspond to drawings.
- If a motor is supplied, make sure power voltage requirements suit available source.
- Concrete floor must be poured and leveled. Verify with a laser.

Do not begin the installation until all requirements are met. Please report to the client and Mobilflex any problems or differences with the shop drawings before starting the installation.

2. Supports:

It is imperative that the supports are installed plumb and level in all directions. Locate the exact position position of the supports as indicated on the shop drawing.

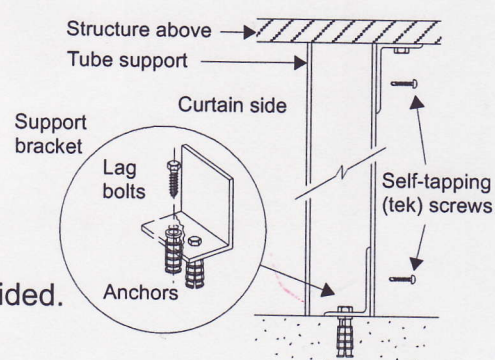
(Determine the support type and proceed to point 3, 4 or 5.)

3. Tube supports:

Tubes must be square to the line of the door.

- Mark the location of the base of the tubes.
- Secure support brackets to floor using the supplied lag bolts and sleeve anchors. Pre-drill using 5/8" (16mm) masonry bit.
- Anchor the tubes to the structure above with support brackets provided.

(Continue to point 6.)

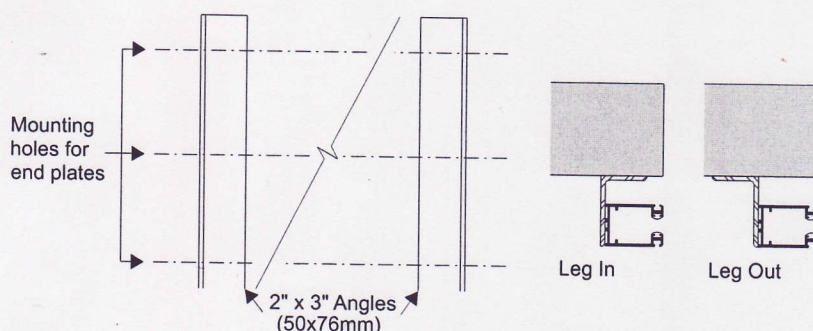


4. Angle supports:

- Verify that the holes for the end plates are leveled.
- Secure angles to the supporting structure oriented as shown on the shop drawing.

(Leg in or leg out)

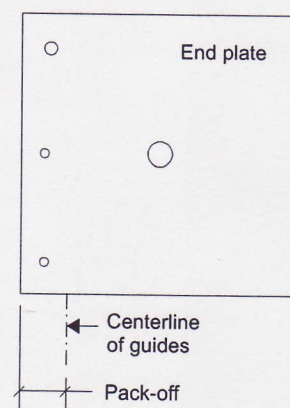
(Continue to point 6.)



5. Between jambs or 2 walls:

- Mark the location of the mounting holes for the end plates on walls or jambs.
- Install end plates plumbed and leveled.
- Indicate the centerline for the guides by measuring the pack-off from the edge of the end plates.
- Remove the end plates to install the barrel.

(Continue to point 6.)



6. Positon of barrel:

Do not remove grille from crate.

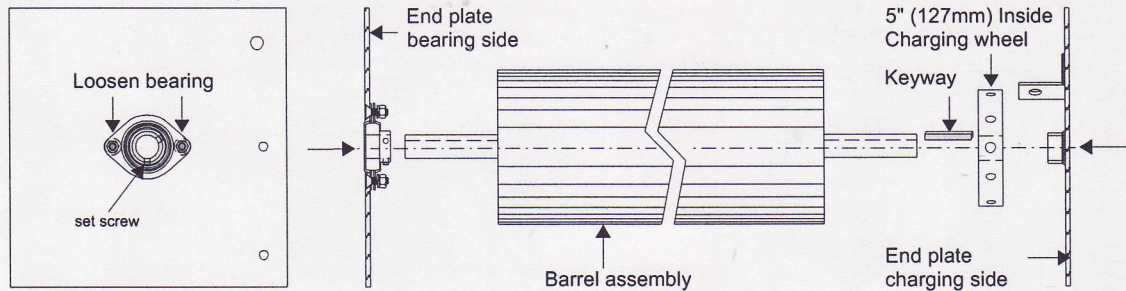
- Remove top of crate and check closure curtain width against drawing. Curtain width is usually 2-1/2" (64mm) wider than the finished opening.
- Place barrel on the floor near the supports. Orient the barrel so that the charge side is as indicated on the shop drawing. This is done by looking at the curtain from the coil side.

ROLLING CLOSURES

Installation instructions

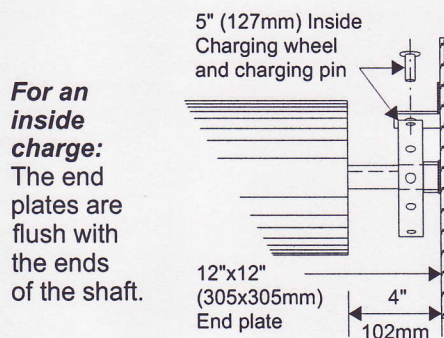
7. Barrel and end plate assembly:

- Loosen the bearing on the end plate and slide the end plate onto shaft at opposite end of the charging wheel. For an inside charging wheel, slide it onto shaft with keyway before the end plate.
- Slide in the other end plate.

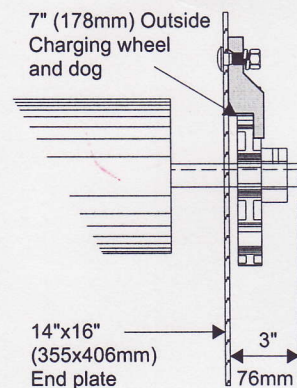
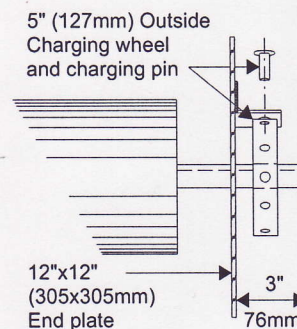


8. Installation of barrel and end plate assembly:

- Using a lift, hoist the barrel into place and attach the end plates to the supports.
- Center the barrel assembly between the end plates.



For an outside charge:
The outside face of the end plates are at 3" (76mm) from the edge of the shaft.

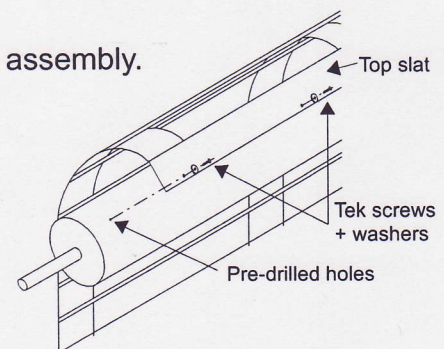
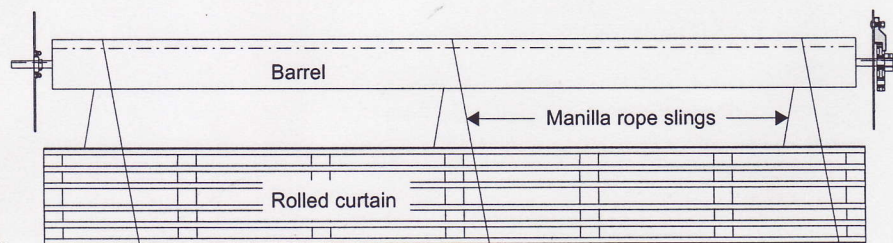


9. Bearing and Charging wheel:

Retighten bearing on the end plate and secure bearing to the shaft using the set screws. For an outside charge, slide the charging wheel and keyway on the shaft. Align the 5" (127mm) charging wheel with the charging pin or the 7" (178mm) wheel with the charging wheel key (dog) and tighten the set screws.

10. Curtain:

- Put the crate as close as possible to the supports and on the correct side prior to lifting.
 - Note that the barrel assembly has pre-drilled holes to receive the top slat of the grille to attach the curtain. Rotate barrel assembly so that these holes are accessible.
 - Remove grille from crate, put on lift or scaffold just below the barrel assembly. Use 3 or 4 manila rope slings over the barrel and around the grille. Should any mishap occur, the grille would then be secured and not fall from the top.
 - Insert self-tapping (tek) screws with washers through the top slat of the grille and secure to the barrel.
- Make sure sufficient personnel are used to prevent the grille from twisting and damaging finishes.

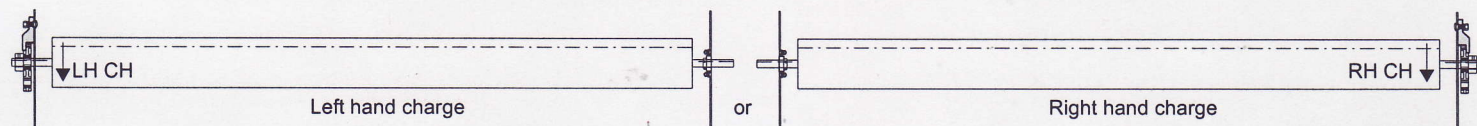


ROLLING CLOSURES

Installation instructions

11. Charge of spring assembly:

To charge the spring assembly, stand on the coil side. The direction of charging is shown on the barrel.



- A. If you have a 7" (178mm) charging wheel, loosen the charging wheel key (dog) slightly and use a pipe wrench directly on the shaft to charge the spring. If you have a 5" (127mm) charging wheel, use two 1/2" (13mm) rods inserted in the charging wheel to charge the spring. On the shop drawing, you will find a guideline for the number of turns required.

For an outside charge: Charge until curtain supports itself. Then you can remove the manila ropes.

For an inside charge: Hang down grille. A helper should hold the grille down while charging.

- B. Before completing the charge (+/- 50%), install the aluminium guides with top stoppers to prevent the grille from by-passing the opening.

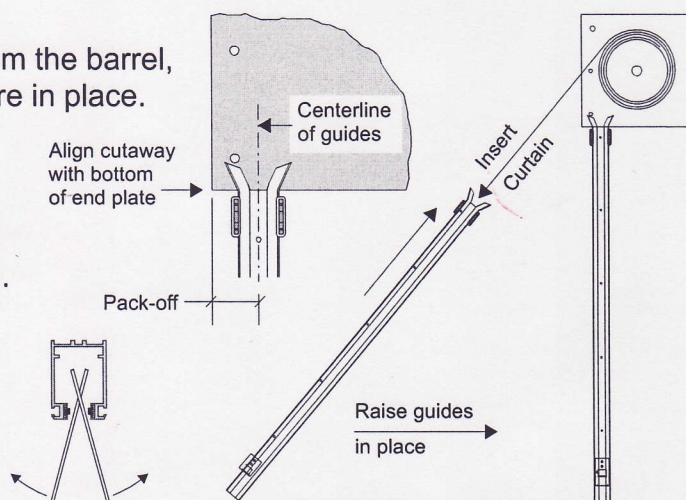
12. Guide installation:

- A. If there is available space, pull the curtain away from the barrel, slide in the guides, raise them in position and secure in place.

The bottom of the cutaway at the top of the guides should be flush with the bottom of the end plates.

- B. Align with the pre-drilled holes on the supports or refer to the shop drawing for the centerline location. If there is no space available to pull on the curtain, remove the stoppers, install the guides, slide in the grille and reinstall the stoppers.

- C. Open up the guides with 2 flat bars to prevent the curtain from binding when rolling in the guides.



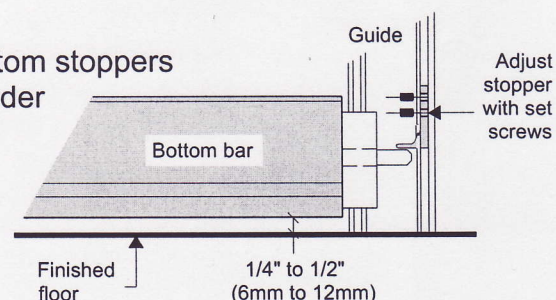
13. Testing of the charge:

- A. Once the charge is completed, either retighten the charging wheel key (dog) to the end plate for the 7" (178mm) charging wheel or insert the charging pin for the 5" (127mm) charging wheel.
- B. Test the grille in 3 positions. First in the down position, only a small amount of pressure should be required to hold down the grille. Second position at approximately 4 feet (1,2m) from the floor, the grille should stay in position or slowly rise. Third position between 6 to 7 feet (1,8m to 2m), the grille should again stay in position or slowly rise. If not, adjust the charge.

14. Adjustement of stoppers:

Lower the grille and lock in position. Adjust the height of the bottom stoppers inside the guides to ensure proper locking and minimum gap under the locked bottom bar. If the stopper is set too low, there will be too much friction with the locking rod and it may not unlock. Clearance should be around 1/4" to 1/2" (6mm to 12mm).

A pull rod is provided to aid in the operation of the door.



Options:

(Refer to the applicable option(s), continue to point 15 for motor or 16 for hand crank and/or 17 for hood.)

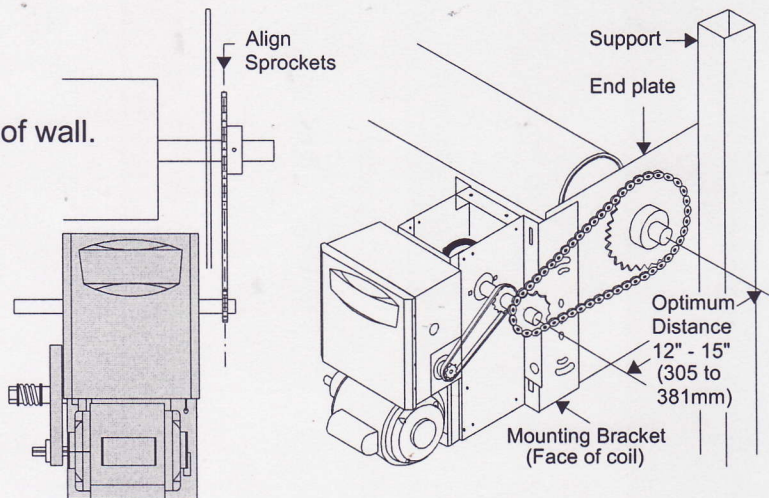
ROLLING CLOSURES

Installation instructions

15. Motor installation:

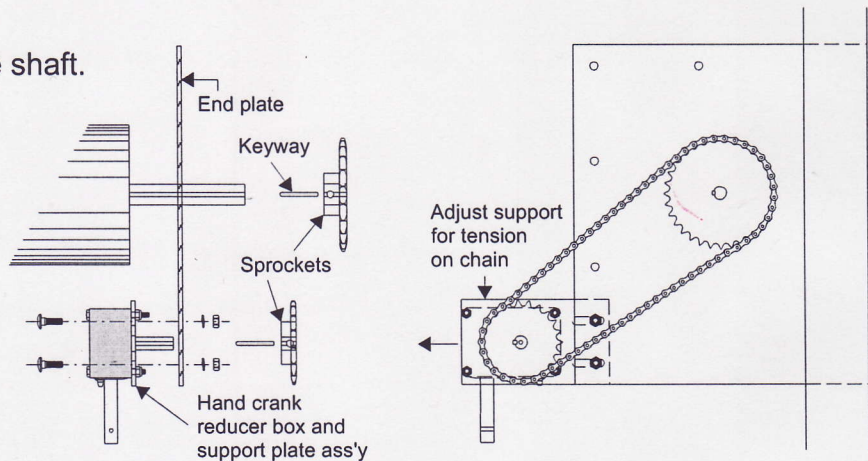
- A. Install the motor bracket to the end plate for a face of coil or above coil mount.
- A'. Install motor to the bracket or directly to face of wall.
- B. Slide sprocket and keyway on the shaft.
Align with the motor sprocket and secure in place with the set screws.
- C. Install the chain, determine the length and connect chain with link. Put tension on the chain by adjusting the motor bracket.

Refer to separate instructions to finalise the motor installation. Only a qualified electricien should connect the power to the motor.



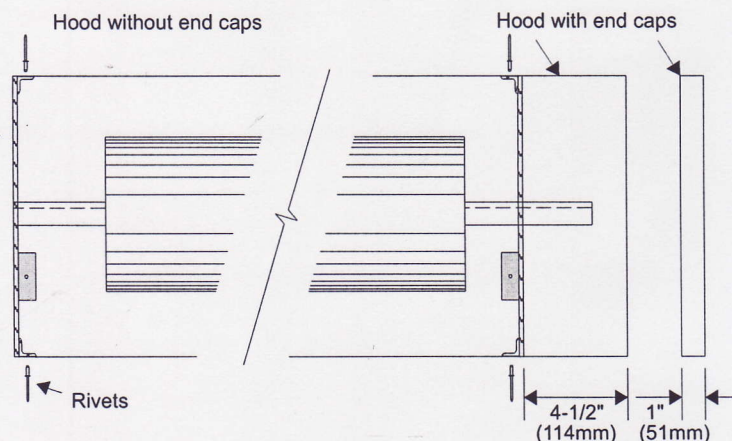
16. Hand crank:

- A. Slide the sprocket and keyway on the shaft.
 - B. Install the reducer box and support plate assembly to the end plate.
 - C. Install the chain, determine the length and connect chain with link.
 - D. Put tension on the chain by adjusting the support plate.
- If a hand crank extension is required, it will already be installed to the reducer box. Insert the crank handle to operate.



17. Hood:

- A. For hoods wider than 20 feet (6,1m), a support bracket is provided and should be installed in the center of the opening before the hood.
- B. If the hood is made of 2 parts, assemble together with rivets before attaching to the end plates. If there are no end caps, the hood should expand from end plate to end plate. If end caps are provided, the hood should expand 4 1/2" (114mm) beyond the end plates on each side.
- C. Secure the hood with rivets to the tabs welded to the end plates.
- D. Install end caps if provided.



18. Final inspection of installation:

Some of the above steps may need to be modified to account for custom options, oversized doors or unique site conditions.

- A. Upon completion, the installer is to verify that all components of the door work properly.
- B. Ensure that the door is left clean and the keys are delivered to the customer.
- C. Explain to customer the proper operation of the rolling grille.
- D. Please recycle packaging materials where possible.